

Optimal Efficiency and Organization

Patch Panels and Cassettes

A key component in the structured cable plant, the patch panel, is a basic building block for cable management. While some customers require extremely high-density solutions, we have found that there is a balance between density and ease-of-use: the greater the density, the higher the degree of discipline required to keep the patching field clean and organized.

In fact, higher density can quickly become a negative if the user is not actively managing the environment. While this begins with using the correct jumper cable lengths and avoiding unnecessary cable slack, patch panel design and selection plays a crucial role. Your patching area is designed to enhance the manageability and performance of the data center, so if it is too densely populated and disorganized, you really have defeated its purpose and negated its value as a useful tool.

We've kept it simple with a family of 1U, 4U, and 6U patch panels and cassettes. Whether you are building out a new infrastructure or expanding legacy cabling, Conexus has a product solution to help.

LGX Style Cassettes

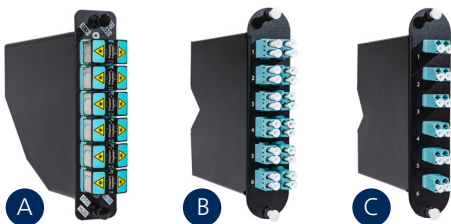
12-Port MTP-LC Duplex

- Pictured with external shutters – also available with internal shutters
- Fits LGX standard enclosures



After Market Cassettes to Fit Corning, Commscope, and Panduit Enclosures

- **A:** fully compatible and interchangeable with Commscope Systemax
- **B and C:** fully compatible and interchangeable with Corning CCH and Corning Universal



1U, 4U, and 6U Rack-Mount Patch Panels

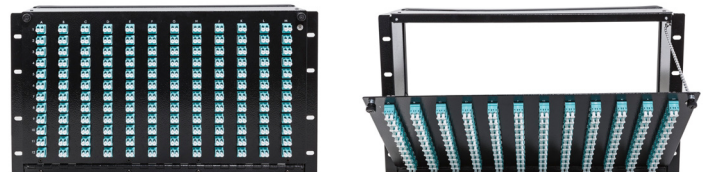
48-Port, 1U MTP-LC Duplex Panel

- Internal shutters in adapters reduce mess from dust caps that can clutter patching area, and promote eye safety



144-Port LC Duplex, 6U

- Hinging front-access for mounting opposing panels in same rack
- Expandable to 288-ports in same footprint and ultra-high density 576-ports if mounted in opposing rack spaces



CONEXUS